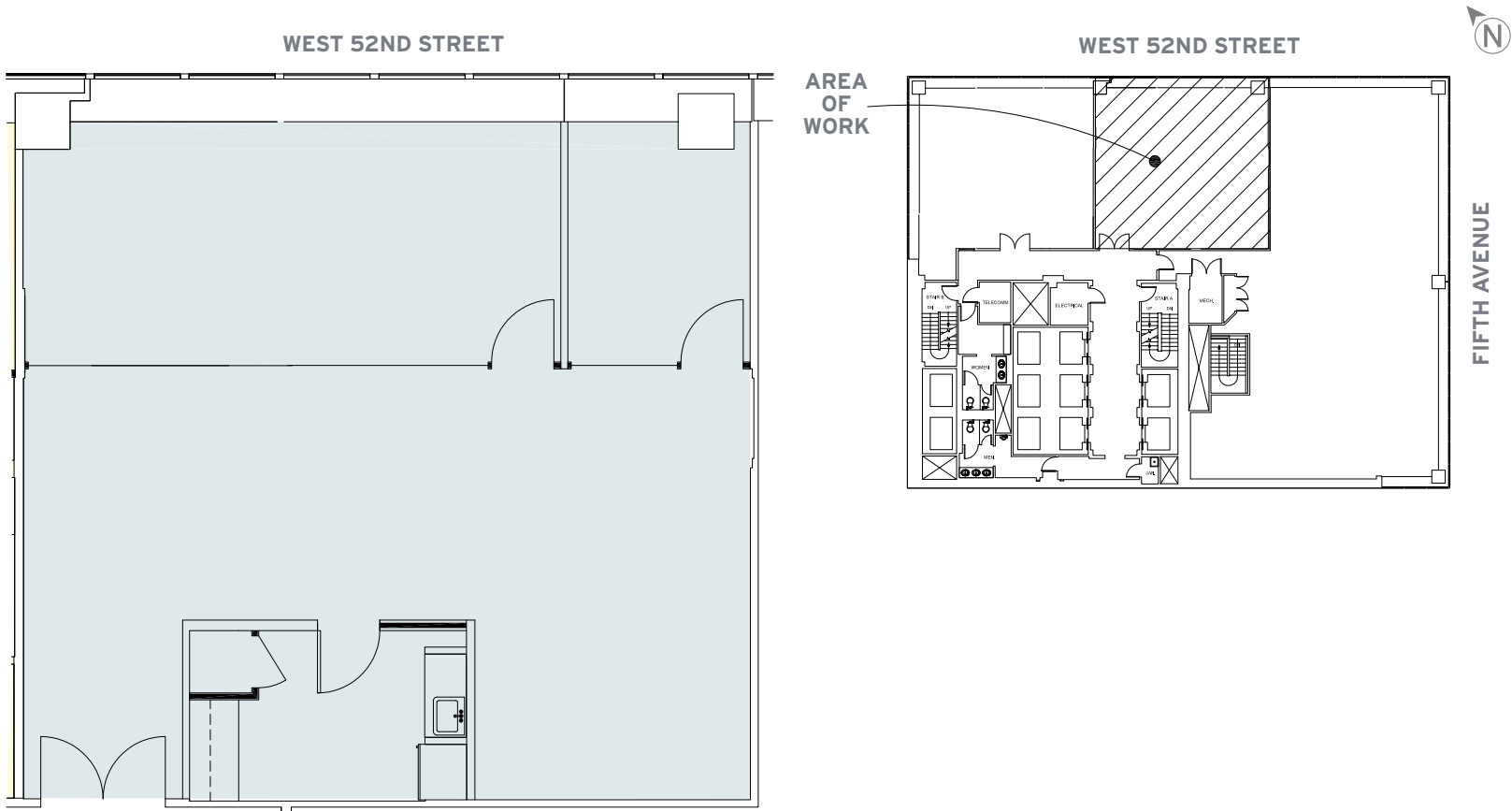


EXCELLENCE FROM THE GROUND UP

**PARTIAL 10TH FLOOR: 2,080RSF
AVAILABLE IMMEDIATELY**



FOR LEASING INFORMATION PLEASE CONTACT:



BARRY ZELLER
212-841-5913
barry.zeller@cushwake.com

JONATHAN FALES
212-841-5969
jonathan.fales@cushwake.com

HALEY FISHER
212-841-7892
haley.fisher@cushwake.com

MICHAEL TRANFALIA
212-841-5981
michael.tranfalia@cushwake.com

PIERCE HANCE
212-841-7641
pierce.hance@cushwake.com