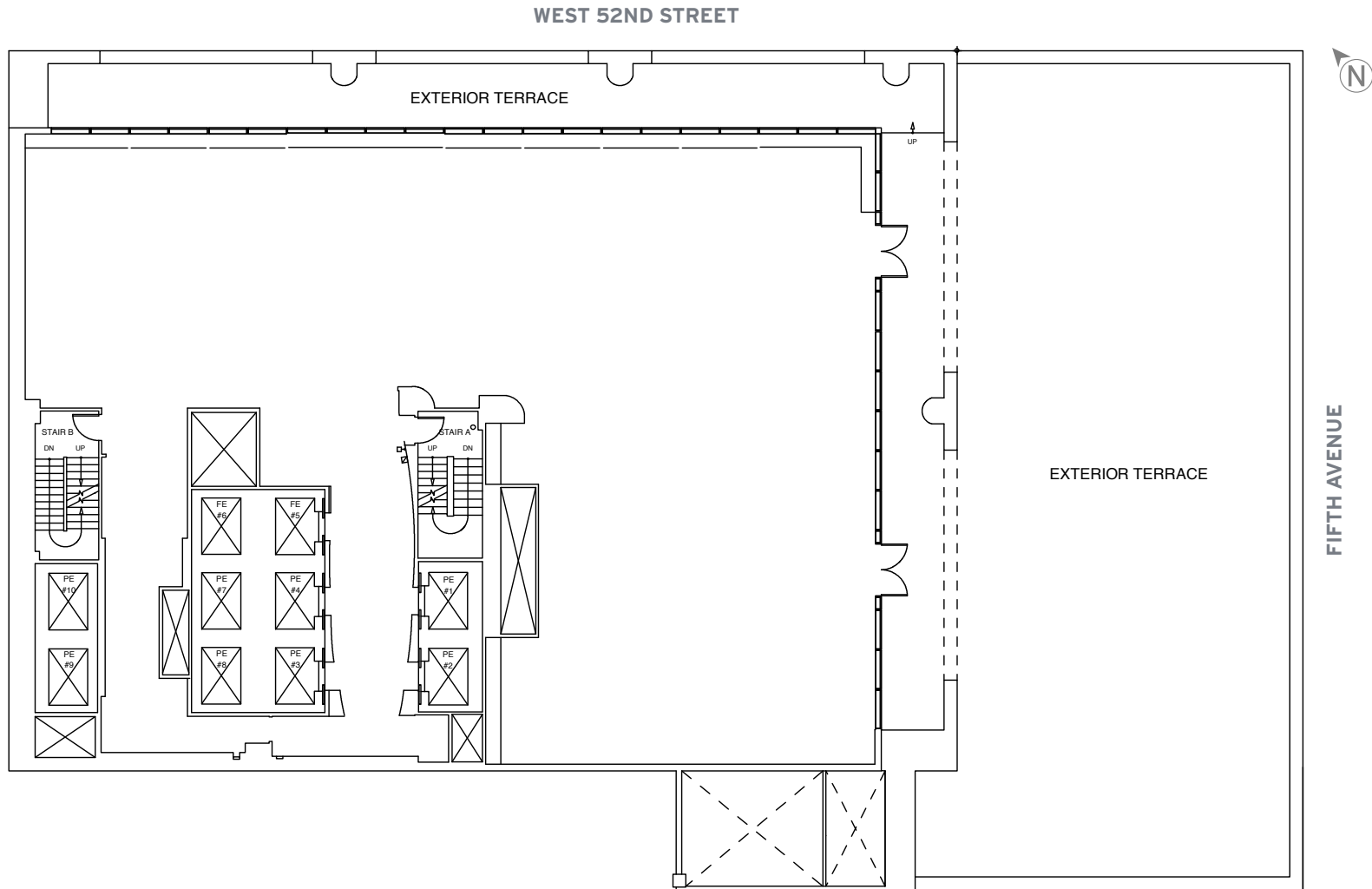


ENTIRE 7TH FLOOR: 8,610RSF



FOR LEASING INFORMATION PLEASE CONTACT:



**BARRY ZELLER**  
212-841-5913  
barry.zeller@cushwake.com

**JONATHAN FALES**  
212-841-5969  
jonathan.fales@cushwake.com

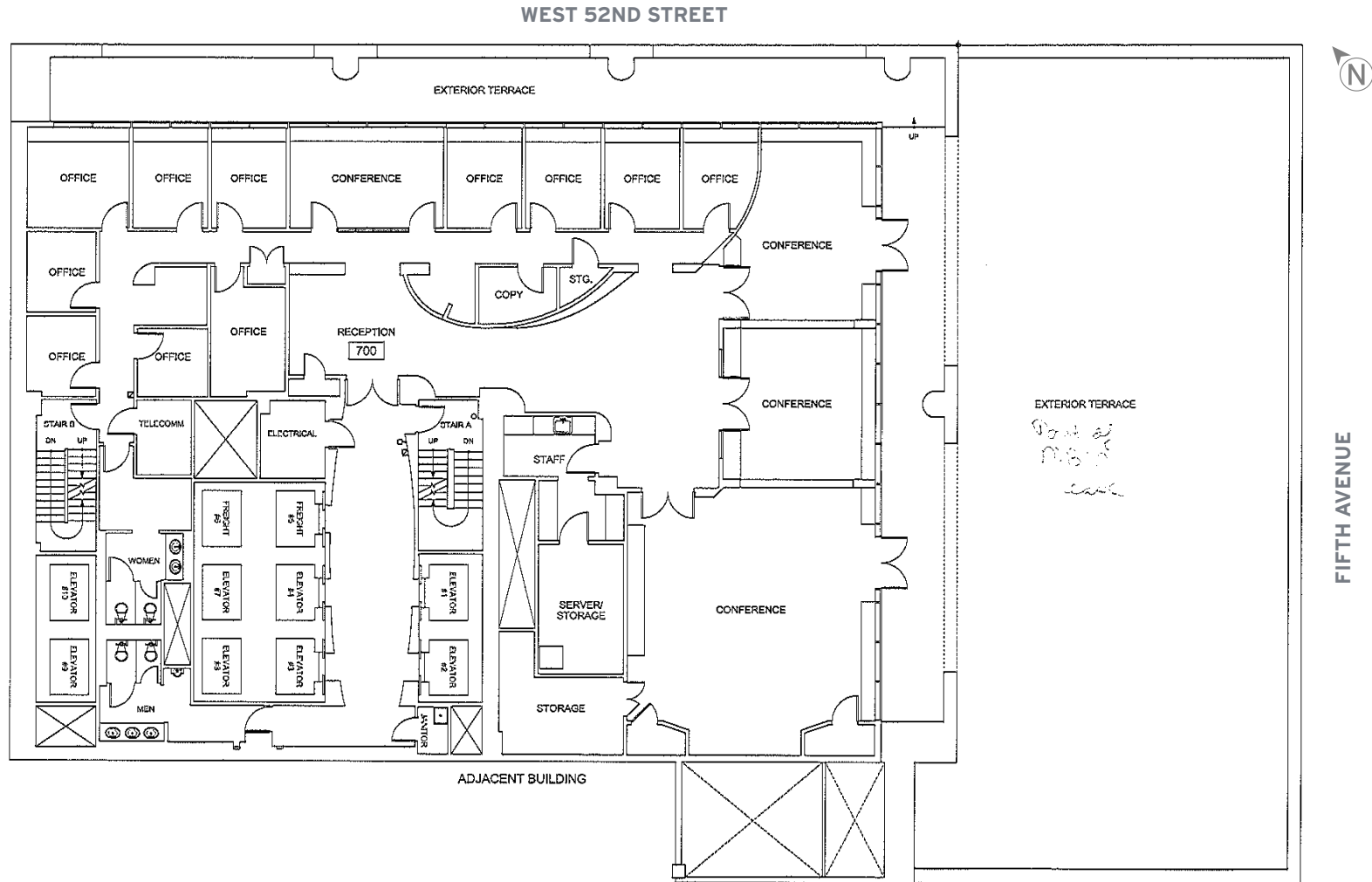
**HALEY FISHER**  
212-841-7892  
haley.fisher@cushwake.com

**MICHAEL TRANFALIA**  
212-841-5981  
michael.tranfalia@cushwake.com

**PIERCE HANCE**  
212-841-7641  
pierce.hance@cushwake.com

# EXCELLENCE FROM THE GROUND UP

ENTIRE 7TH FLOOR EXISTING CONDITIONS: 8,610RSF



FOR LEASING INFORMATION PLEASE CONTACT:



**BARRY ZELLER**  
212-841-5913  
barry.zeller@cushwake.com

**JONATHAN FALES**  
212-841-5969  
jonathan.fales@cushwake.com

**HALEY FISHER**  
212-841-7892  
haley.fisher@cushwake.com

**MICHAEL TRANFALIA**  
212-841-5981  
michael.tranfalia@cushwake.com

**PIERCE HANCE**  
212-841-7641  
pierce.hance@cushwake.com