

# Detail in Every Detail

ENTIRE 32ND FLOOR OPEN OFFICE TEST FIT – 11,296 RSF  
TO BE DELIVERED RAW / TURNKEY



| LEGEND                 |           |
|------------------------|-----------|
| WORKSPACE              | SEATS     |
| EXECUTIVE OFFICE       | -         |
| PRIVATE OFFICE         | 4         |
| BENCHING (5'X36")      | 52        |
| RECEPTION              | 1         |
| <b>TOTAL HEADCOUNT</b> | <b>57</b> |
| COLLAB SPACE           | QNTY      |
| 12P CONFERENCE         | 1         |
| 10P CONFERENCE         | -         |
| 6P CONFERENCE          | 1         |
| 3-4P MEETING           | 3         |
| PHONE ROOM             | -         |
| OPEN COLLABORATION     | 1         |
| SUPPORT                | QNTY      |
| CAFE                   | 1         |
| WELLNESS ROOM          | 1         |
| COPY AREA              | 1         |
| IT ROOM                | 1         |
| STORAGE CLOSET         | 3         |
| COAT CLOSET            | 1         |
| ADA RESTROOM           | 1         |

FOR LEASING INFORMATION PLEASE CONTACT:



**BARRY ZELLER**  
212-841-5913  
barry.zeller@cushwake.com

**JONATHAN FALES**  
212-841-5969  
jonathan.fales@cushwake.com

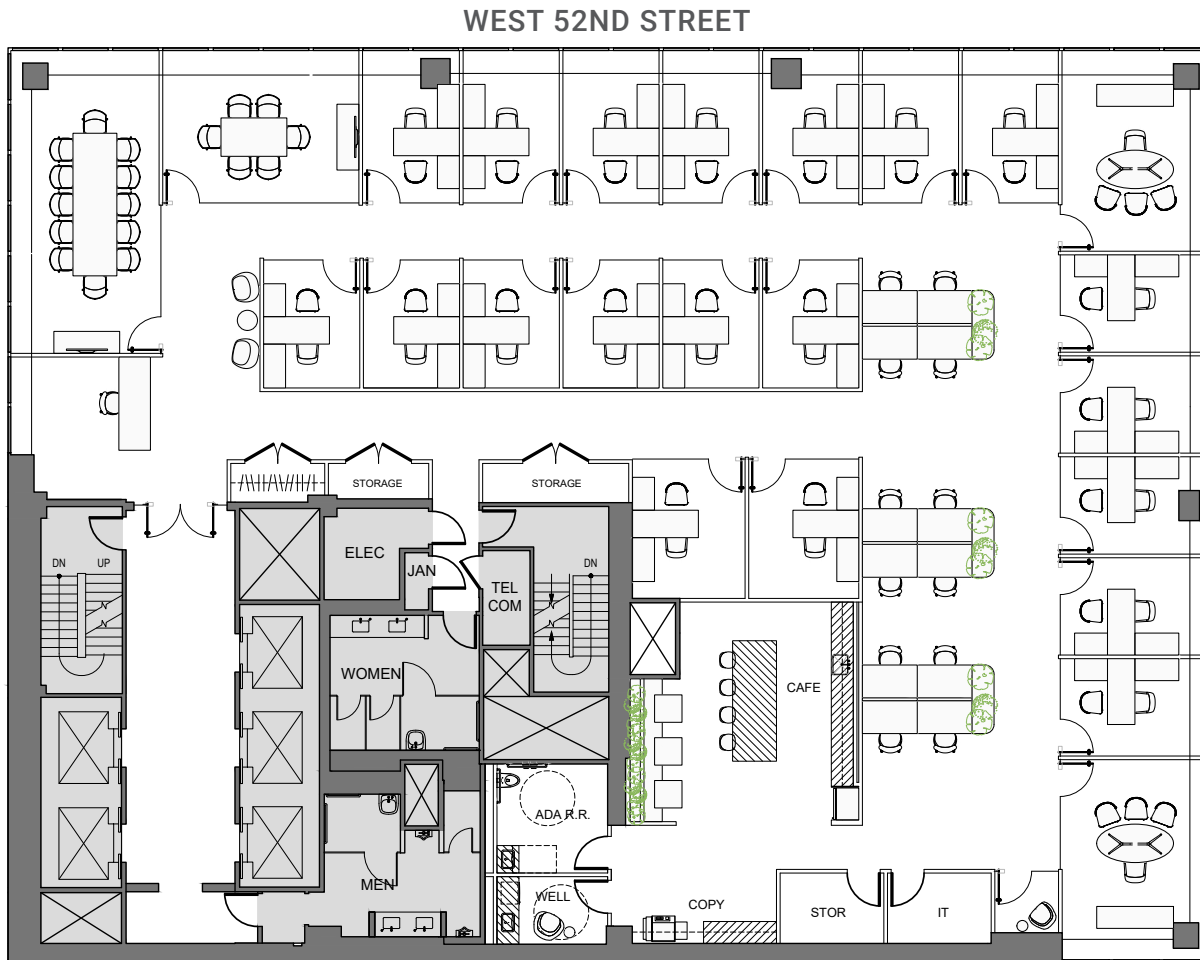
**MIKE TRANFALIA**  
212-841-5981  
michael.tranfalia@cushwake.com

**MICHELLE MEAN**  
212-841-7945  
michelle.mean@cushwake.com



# Detail in Every Detail

ENTIRE 32ND FLOOR OFFICE INTENSIVE TEST FIT – 11,296 RSF  
TO BE DELIVERED RAW / TURNKEY



| LEGEND                 |           |
|------------------------|-----------|
| WORKSPACE              | SEATS     |
| EXECUTIVE OFFICE       | 2         |
| PRIVATE OFFICE         | 20        |
| BENCHING (5'X36")      | 12        |
| RECEPTION              | 1         |
| <b>TOTAL HEADCOUNT</b> | <b>35</b> |
| COLLAB SPACE           | QNTY      |
| 12P CONFERENCE         | 1         |
| 6P CONFERENCE          | 1         |
| PHONE ROOM             | 1         |
| SUPPORT                | QNTY      |
| CAFE                   | 1         |
| WELLNESS ROOM          | 1         |
| COPY AREA              | 1         |
| IT ROOM                | 1         |
| STORAGE CLOSET         | 3         |
| COAT CLOSET            | 1         |
| ADA RESTROOM           | 1         |

FOR LEASING INFORMATION PLEASE CONTACT:



**BARRY ZELLER**  
212-841-5913  
barry.zeller@cushwake.com

**JONATHAN FALES**  
212-841-5969  
jonathan.fales@cushwake.com

**MIKE TRANFALIA**  
212-841-5981  
michael.tranfalia@cushwake.com

**MICHELLE MEAN**  
212-841-7945  
michelle.mean@cushwake.com

