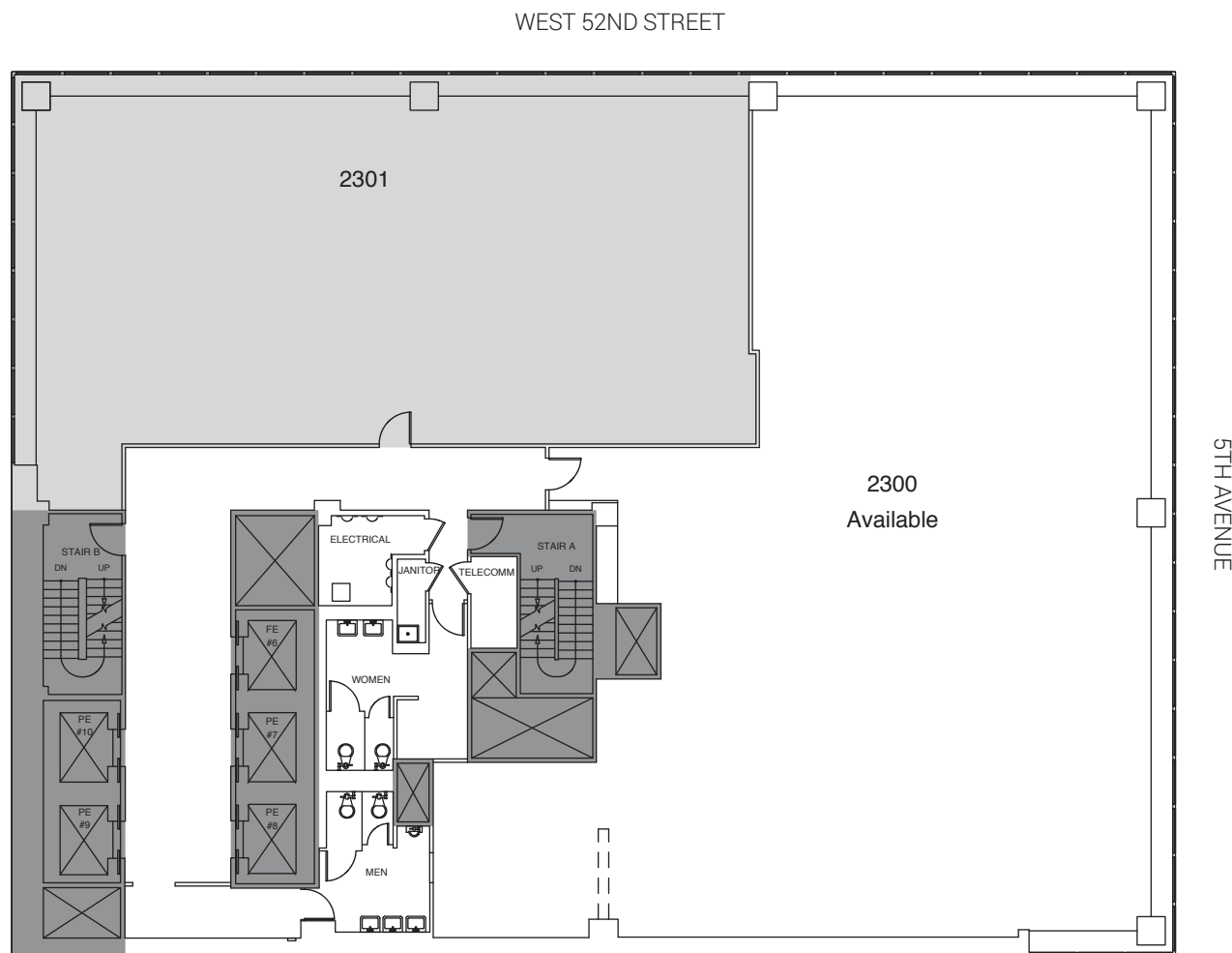


PARTIAL 23RD FLOOR - 7,093 RSF
AVAILABLE IMMEDIATELY



FOR LEASING INFORMATION, PLEASE CONTACT:

BARRY ZELLER
212-841-5913
barry.zeller@cushwake.com

HALEY FISHER
212-841-7892
haley.fisher@cushwake.com

JONATHAN FALES
212-841-5969
jonathan.fales@cushwake.com

MICHAEL TRANFALIA
1 212 841 5981
michael.tranfalia@cushwake.com