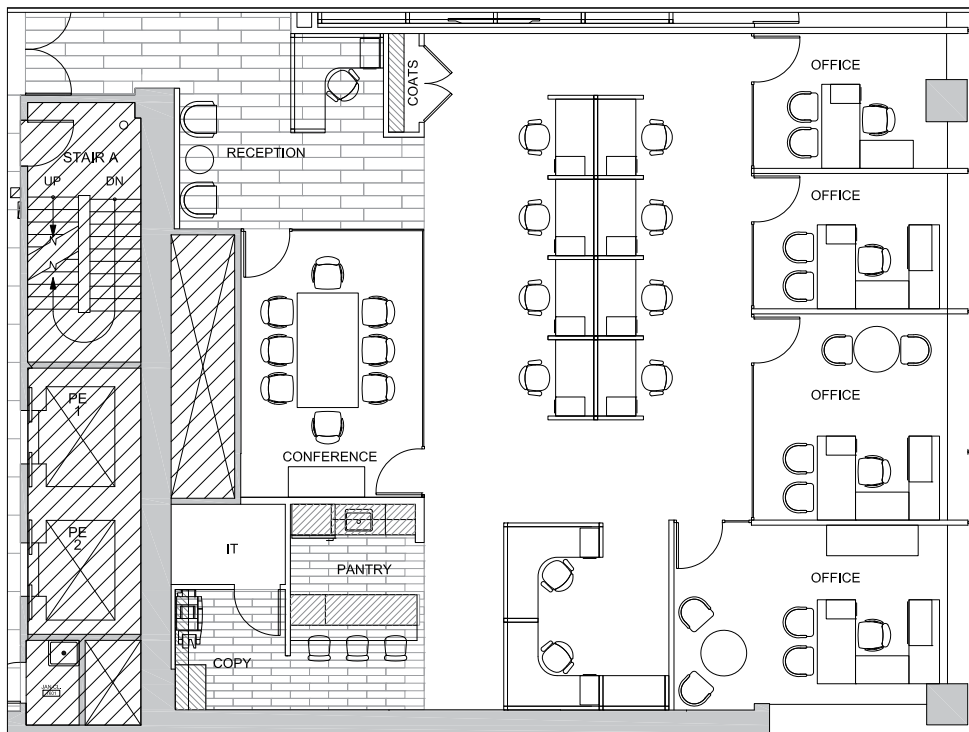


PARTIAL 16<sup>TH</sup> FLOOR - 4,116 RSF  
AVAILABLE IMMEDIATELY



5TH AVENUE

### FOR LEASING INFORMATION, PLEASE CONTACT:



**BARRY ZELLER**  
212-841-5913  
barry.zeller@cushwake.com

**HALEY FISHER**  
212-841-7892  
haley.fisher@cushwake.com

**JONATHAN FALES**  
212-841-5969  
jonathan.fales@cushwake.com

**MARIA TRAVLOS**  
212-713-6795  
maria.travlos@cushwake.com