

A POWER MOVE

24TH FLOOR PRE-BUILTS:

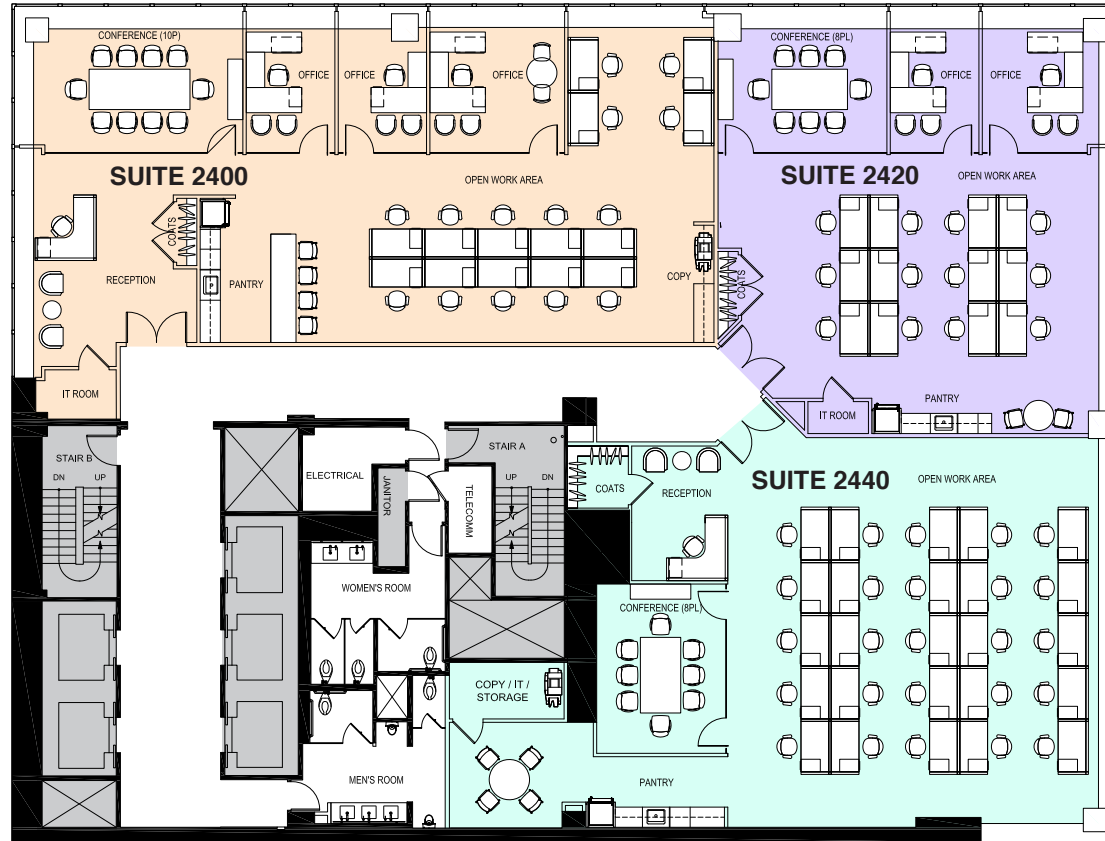
SUITE 2400: 4,107 RSF; SUITE 2420: 2,820 RSF; SUITE 2440: 4,047 RSF



WEST 52ND STREET

SUITE 2400 4,107 RSF		SUITE 2440 4,047 RSF	
CATEGORY	QUANTITY AS SHOWN	CATEGORY	QUANTITY AS SHOWN
OFFICE	3	OFFICE	-
BENCHING	14	BENCHING	25
RECEPTIONIST	1	RECEPTIONIST	1
TOTAL PERSONNEL	18	TOTAL PERSONNEL	26
RECEPTION AREA	1	RECEPTION AREA	1
CONF. ROOM	1	CONF. ROOM	1
PANTRY	1	PANTRY	1
COPY	1	COPY	1
COAT CLOSET	1	COAT CLOSET	1
IT ROOM	1	IT ROOM	1

SUITE 2420 2,820 RSF	
CATEGORY	QUANTITY AS SHOWN
OFFICE	2
BENCHING	12
RECEPTIONIST	-
TOTAL PERSONNEL	14
RECEPTION AREA	-
CONF. ROOM	1
PANTRY	1
COPY	-
COAT CLOSET	1
IT ROOM	1



FIFTH AVENUE

FOR LEASING INFORMATION, PLEASE CONTACT:

Barry Zeller

212.841.5913

barry.zeller@cushwake.com

Haley Fisher

212.841.7892

haley.fisher@cushwake.com

Jonathan Fales

212.841.5969

jonathan.fales@cushwake.com

Michael Tranfalia

212.841.5981

michael.tranfalia@cushwake.com

Pierce Hance

212.841.7641

pierce.hance@cushwake.com