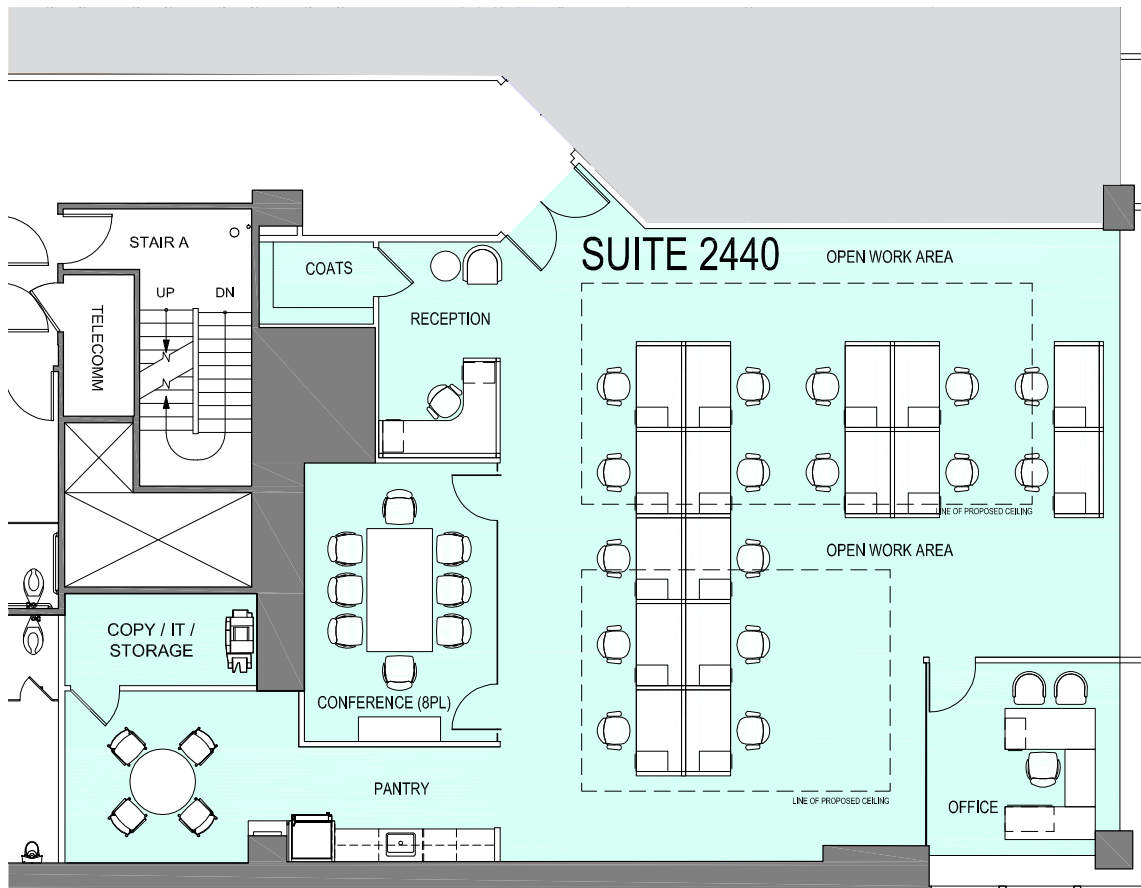
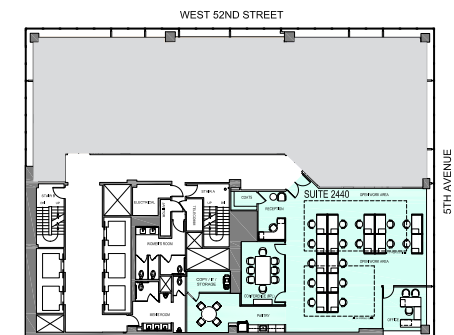


PARTIAL 24TH FLOOR NEW PRE-BUILT – SUITE 2440: 4,057 RSF



FIFTH AVENUE

SUITE 2440		4,057 RSF
CATEGORY	QUANTITY AS SHOWN	
OFFICE	1	
BENCHING	16	
RECEPTIONIST	1	
TOTAL PERSONNEL	18	
RECEPTION AREA	1	
CONF. ROOM	1	
PANTRY	1	
COPY	1	
COAT CLOSET	1	
IT ROOM	1	



FOR LEASING INFORMATION PLEASE CONTACT:



BARRY ZELLER
212-841-5913
barry.zeller@cushwake.com

JONATHAN FALES
212-841-5969
jonathan.fales@cushwake.com

MICHAEL TRANFALIA
212-841-5981
michael.tranfalia@cushwake.com

MICHELLE MEAN
212-841-7945
michelle.mean@cushwake.com



WiredScore
GOLD