

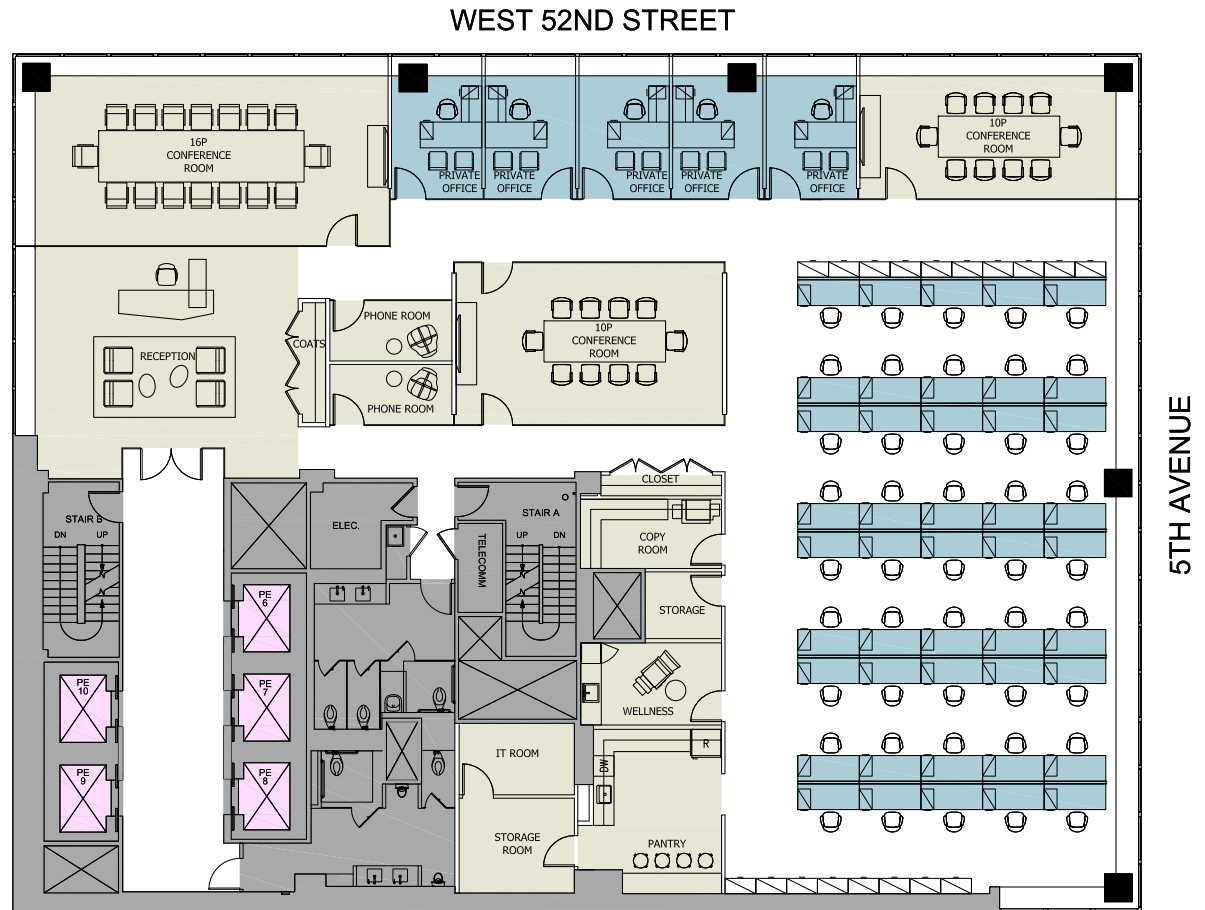
# A POWER MOVE

Entire 31<sup>ST</sup> Floor: 11,289 RSF  
Available March 2018

650 FIFTH AVENUE 31ST FLOOR			
CATEGORY	QUANTITY AS SHOWN	REQUIRED	DIFFERENCE
OFFICE	5	5	-
WORKSTATIONS	44	45	+1
RECEPTIONIST	1	1	-
TOTAL PERSONNEL	50	51	+1
CONF. ROOM (15P)	1	1	-
CONF. ROOM (8-10P)	2	2	-
PANTRY	1	1	-
COPY/STG	1	1	-
COAT CLOSET	1	2	+1
IT	1	1	-
WELLNESS	-	1	+1
PHONE ROOM	-	2	+2

**LEGEND**

- WORK AREA
- SUPPORT AREA



FOR LEASING INFORMATION, PLEASE CONTACT:

**Barry Zeller**

212.841.5913

barry.zeller@cushwake.com

**Haley Fisher**

212.841.7892

haley.fisher@cushwake.com

**Jonathan Fales**

212.841.5969

jonathan.fales@cushwake.com

**Michael Tranfalia**

212.841.5981

michael.tranfalia@cushwake.com

**Pierce Hance**

212.841.7641

pierce.hance@cushwake.com