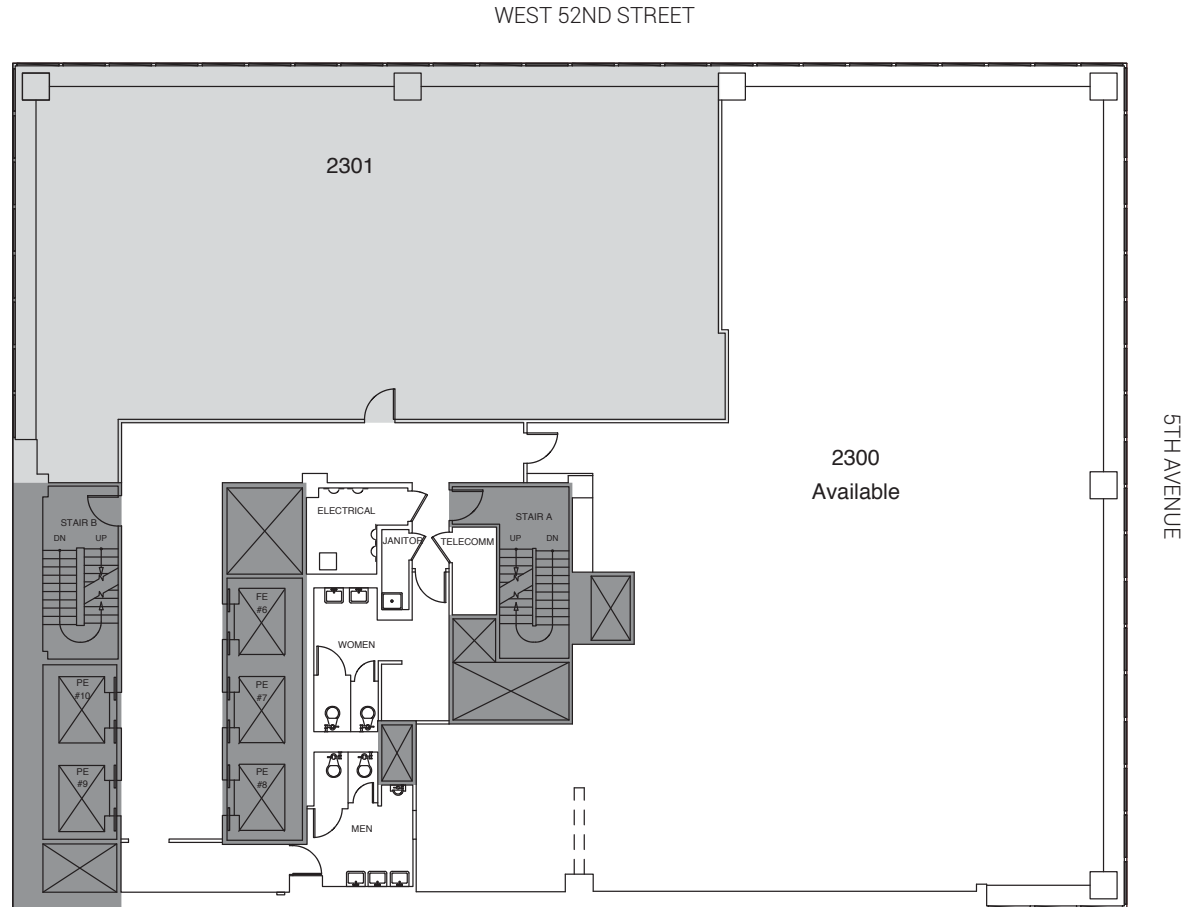


A POWER MOVE

Partial 23RD Floor: 7,093 RSF
Available Immediately



FOR LEASING INFORMATION, PLEASE CONTACT:

Barry Zeller

212.841.5913

barry.zeller@cushwake.com

Haley Fisher

212.841.7892

haley.fisher@cushwake.com

Jonathan Fales

212.841.5969

jonathan.fales@cushwake.com

Michael Tranfalia

212.841.5981

michael.tranfalia@cushwake.com

Pierce Hance

212.841.7641

pierce.hance@cushwake.com